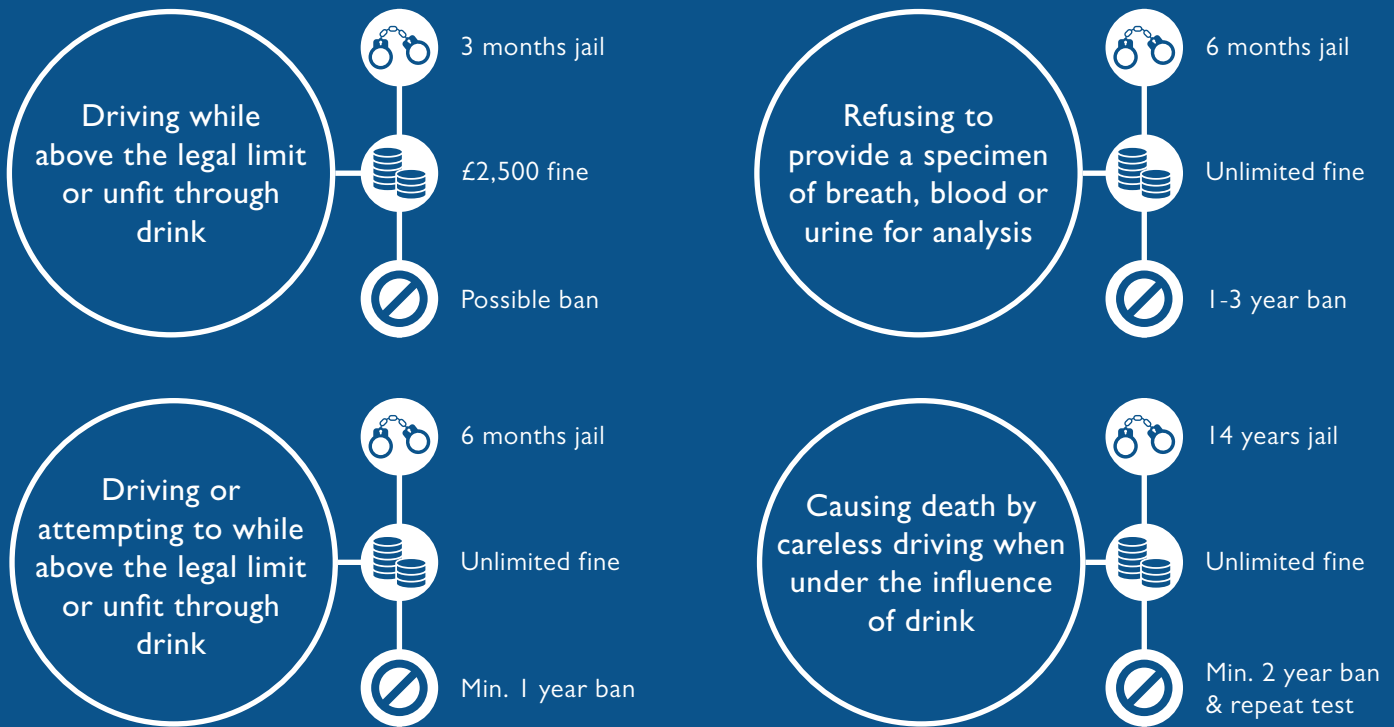


You could be imprisoned, banned from driving and face a fine if you're found guilty of drink-driving. The actual penalty you get is up to the magistrates who hear your case, and depends on your offence.



THE HIGH RISK OFFENDERS SCHEME

Your driving licence won't be returned automatically at the end of a driving ban if you're a 'high risk offender'. You're a high risk offender if you:



Were convicted of 2 or more drink-driving offences within 10 years



Tested 87.5µg alcohol/100ml breath, 200mg alcohol/100ml blood, or 267.5mg alcohol/100ml urine



Refused to give the police a sample of breath, blood or urine to test for alcohol



Refused to allow a sample of your blood to be tested for alcohol

A CONVICTION FOR DRINK-DRIVING ALSO MEANS:



Your car insurance costs will increase significantly



Your employer will see your conviction on your licence



Trouble travelling to countries like the USA